



PEDERSOLI DAVIDE & C. S.n.c.

25063 GARDONE V.T. (BS) – ITALY
Via Artigiani, 57 – P. O. Box 150
Tel. 030.8915000 – fax 030.8911019



PEDERSOLI²
MODERN BLACK POWDER DIVISION



MUZZLELOADER MANUAL

DENALI

S.612

S.613

S.614



NOTICE

You must read this booklet prior to loading or shooting your firearm.

TABLE OF CONTENTS

Notices and disclaimers

Safety Notice	03
Warranty Information	03
Disclaimer of Liability.....	03
Proof House test	03

Before you use your firearm

Important Cautions For Muzzleloading Shooting.....	03
--	----

General Guidelines for the use of Firearms

Precautions	04
Firing	04
Ammunition	05
Malfunctions	05
Steps for clearing a malfunction	05
Storage.....	05

Loading and shooting Instructions

Steps for loading your muzzleloader	06
---	----

Fiber optic sights and scope mounting

Fiber optic sights	06
Scope Mounting	07

Disassembly and Cleaning

Disassembling your firearm	08
Cleaning your Firearm	08
Re-Assembly of your firearm	08
Parts list and blow apart diagram	09

NOTICES AND DISCLAIMERS

SAFETY NOTICE

A firearm is a sport or law enforcement tool capable of injuring and killing. It is a precision instrument designed to function reliably with proper care and knowledgeable use. If you do not have full knowledge of the power and function of your firearm, we recommend that you seek proper training. Careless and improper handling of guns can result in unintended discharge and injury, death, or property damage. Safety must be the first and constant consideration when handling a firearm and ammunition. Various safety features have been incorporated into each firearm but relying on mechanical features alone is, at most, only half safe. Mechanical safety devices are not fail-safe, but more importantly the safe use of any mechanical instrument is dependent upon intelligent use. Accidents do not "just happen" but occur as the result of human behavior, thoughtless acts which jeopardize the wellbeing of the user and those around him or her. Insure the safe use of firearms by following these guidelines.

NOTE: safety devices on guns are extras and do not substitute for your proper and safe handling practices.

WARRANTY INFORMATION

Davide Pedersoli & co. warrants that the firearm purchased is free of defective material and poor craftsmanship. Davide Pedersoli & co will repair or replace any part or whole firearm found to be defective .

Limitations:

- Warranty begins on day of purchase
- Warranty applies only to normal use
- Warranty only applies to original purchaser of the firearm
- Warranty does not apply to item that wear out over time

Warranty is void if:

- Serial number is altered or in otherwise non-original condition
- Defect due to negligence or alteration of the firearm
- Product is not used in a manner specified in this manual

DISCLAIMER OF LIABILITY

Davide Pedersoli & co shall not be responsible for product malfunction or for physical injury, death, or property damage from the guns intentional or accidental discharge, its criminal or negligent use, improper or careless handling, unauthorized modifications or alterations, corrosion or other failure to maintain, use of defective, improper, hand-loaded or reloaded ammunition, or other than original, good condition, high quality, commercially manufactured ammunition, or from its use for purposes or subjection to treatment for which it was not designed. Davide Pedersoli & co will not honor claims made by second or subsequent owners of the firearm. While this firearm was tested, carefully inspected, and packaged before it left the factory, Davide Pedersoli & co cannot thereafter control product handling. Please be sure to examine this firearm carefully when purchasing to ensure it is unloaded and undamaged. Your gun dealer will assist you in making this examination and answer any further questions in this regard.

PROOF HOUSE TEST

This muzzleloader was manufactured in Italy and according to the Italian Law ruling production and sale of arms, all muzzle loading and breech loading firearms must be submitted to forced firing tests at the National Proof House in Gardone Val Trompia (Brescia). Proper marks stating the tests are stamped both on the barrels and on the frame.

BEFORE YOU USE YOUR FIREARM

IMPORTANT CAUTIONS FOR MUZZLELOADING SHOOTING

1. Use black powder or black powder substitute only - never use even small amounts of smokeless powder. All our guns have been regularly proof tested at the National Proof House in Gardone V.T. Italy with a forced test firing, as the mark stamped on each gun testified. Each barrel carries the words "Black Powder only". Under no circumstances should any powder other than black powder or black powder substitute be used in a muzzleloader. Use of any other propellant may cause serious injury to the shooter and damage to the firearm. Black powder should never be stored in a plastic container, which could build a static electricity charge. Otherwise make sure to use non static plastic containers. Keep the container away from heat sources.

Do not exceed 150 grains or go below 80 grains of black powder.

2. 209 primers and black powder should be stored in separate locations.
3. Caps are sensitive to static electricity, heat, flame and percussion. Do not use glass containers to store them, but leave them in their original containers.
4. Never smoke while loading, shooting or handling black powder.
5. Make sure that spectators are completely behind you when firing.
6. Never let the hammer fall on a percussion firearm without a primer.
7. Black powder leaves heavy residues, after firing a prompt and thorough bore cleaning is an absolute necessity to "black powder shooters".

8. Use only non synthetic cloth patching.
9. Protect your eyes from sparks, lead fragments, pieces of caps or flints, by wearing shatter-proof shooting glasses.
10. Protect your ears by using ear-plugs or ear-muffs, when firing your muzzleloader.
11. Never fire at water, flat, or hard surfaces
12. Always check your barrel for obstructions prior to loading or firing. Water, mud, snow or any other materials could obstruct the barrel and cause it to be blown apart.
13. Treat a misfire for failure with extreme care. Keep the gun pointed in a safe direction and wait for at least one full minute before re-priming; there is always the chance a spark could be smouldering in the powder and the gun could fire at any moment.
14. Make sure your gun is in firing condition before you pull the trigger.
15. Never pour powder directly into the bore from a powder flask or container as a sudden powder ignition from a lingering spark could cause the entire flask to explode. Instead, use an individual charge from a powder measure when loading your muzzleloading gun.
16. Never attempt to shoot out a bullet which is not firmly seated against the powder charge. Any air space between the projectile and powder could cause serious damages to the firearms and injury to the shooter. If powder fouling or other circumstances should cause the projectile to become lodged in the bore, partially down the barrel, the bullet must be removed with a screw tip style bullet-puller. Some black powder solvents can be poured to soften any fouling which could be holding the bullet.
17. Be sure that the gun is unloaded. A reference mark on the ramrod will insure that all future projectiles are seated to the same depth. There is a simple way to check it: with an empty barrel run the ramrod to the breech plug and mark it at that muzzle.
18. Never bring a loaded firearm into a house, car, or truck.
19. Never drink alcoholic beverages or take drugs before or while shooting.
20. Consult a competent firearm instructor to clarify any instructions that you might not understand or write to us.
21. If you sell, trade, or give this weapon to another person, make sure to give him this booklet or at least inform him that a copy is available at no charge from Mid Western Outdoor Specialties.
22. Be a safe shooter.

GENERAL GUIDELINES FOR THE USE OF FIREARMS

PRECAUTIONS

Before using any muzzleloading gun, we ask you to carefully read this manual and get thoroughly familiar with the operation of the specific gun for the protection of all.

- Before shooting, learn this guns mechanical and handling characteristics, and thoroughly read and become familiar with these safety instructions. If you do not fully understand any of the instructions in this manual, consult competent firearms instructors through your local gun club or you can write to us at our address.
- Always point the gun in a safe direction, and handle it as though it were loaded. This is especially important when loading and unloading the gun, and when handing it to someone else. Never take someone else word it is unloaded, but always check it yourself with your finger of the trigger and the gun pointed in a safe direction.
- Place your finger inside the trigger guard only when you are ready to fire.
- Do not make any modifications or adjustments to your firearm which will affect the safe and normal function of the gun.
- When purchasing accessories, be sure they are compatible with the firearm and do not interfere with safe operation. Any modification to the mechanical function of the firearm will void the warranty.
- While at a shooting range, always carry the gun unloaded and open until preparing to shoot. Keep it pointing towards the backstop when loading, shooting and unloading.
- If you must carry a loaded gun, always carry it with the muzzle pointing in a safe direction and with the safety in the "safe" position. But remember that no mechanical safety is fail-safe.
- Never carry firearms with exposed hammer with the hammer cocked.
- Do not use your firearm for purposes other than those for which it was designed.
- Do not allow a firearm to be used by untrained individuals.
- When transporting your firearm in any vehicle, be sure it is unloaded and that the action is open.
- Never leave a gun, especially a loaded gun, unattended as someone, especially a child, could accidentally shoot it causing injury, death or property damage.

FIRING

- Use only 209 primers.
- Always keep your muzzle pointed in a safe direction so that if a discharge should occur no injury will be sustained by you or those around you.
- Wait to load your firearm until you are in the location where you are prepared to shoot. Keep the safety engaged at all times until the moment before you discharge the firearm. After discharge, re-engage the safety.
- Whenever firing any type of firearm, wear safety glasses to protect your eyes from sparks, lead fragments, pieces of caps or flints and powder, and ear protection against the loud report.
- In selecting a place to shoot, be sure the area has a safe backstop, is free from obstructions and water-surfaces which cause ricochets, and is protected so that persons or animals cannot accidentally walk into the shooting field. Making sure there is an adequate backstop which will stop and contain bullets. A bullet can travel through or past

your target up to 1 1/2 miles. If you have any doubt, do not shoot.

- When firing on a target range, follow the range officer's commands to load, fire, cease fire and unload.
- Before anyone is allowed to move forward the firing position on a range, be sure all actions of firearms are open and chambers are clear of cartridges; and that firearms are pointing in a safe direction.
- Never use alcoholic beverages or other drugs before or during shooting.
- If your firearm fails to function properly, do not try to fire it and do not force an action that is jammed.
- Beware of obstructions in the barrel. If, when firing, a weak or peculiar report is heard, cease firing, open the action and unload the gun and inspect the barrel for an obstruction or for damage. Do not fire a gun with an obstructed or damaged barrel.
- If you are carrying a loaded gun in the field, never follow a companion.
- Never cross obstacles such as fences or streams with a loaded gun.
- Never run with a loaded gun.
- Do not smoke while handling, loading or shooting any ammunition, especially black powder. Keep black powder in a closed container at all times, closing again the container after each and every use.
- Never engage in "horseplay" while holding your gun.
- Always be aware of other people around you. Keep spectators or others to your rear. Keep hands and face clear and keep others clear of the ejection port as ejected spent cartridges can cause injury. To prevent burns or injury from the slide moving forward, make sure your hand and fingers do not touch or obstruct the ejection port.
- Make sure slide lock safety is applied while gun is cocked and ready to fire. Otherwise, the gun could accidentally discharge, causing injury, death, or property damage.

AMMUNITION

- Use only commercially manufactured .50 caliber black powder bullets.
- Your gun has been designed for ammunition of a specific caliber. Do not alter the barrel, chamber, or caliber for which your gun was designed.
- Use only ammunition specifically recommended for your firearm.

MALFUNCTIONS

The proper function of your firearm is directly related to care and maintenance and to the ammunition used. Your firearm has been designed to function with high quality ammunition produced to commercial standards. Some of the more common types of malfunctions which may occur are as follows:

1. A failure to ignite or fire the projectile
2. The powder ignites but the projectile fails to exit the barrel
3. The projectile cannot be fully seated against the powder charge due to obstruction or fouling in the barrel

STEPS FOR CLEARING A MALFUNCTION

Whether your firearm has failed to ignite or a projectile has become lodged in the barrel, it is important to follow these safety instructions for returning your firearm to working order.

1. Point the muzzle of your firearm in a safe direction, smouldering powder could cause a discharge at any time.
2. Pull the lever and open the breech.
3. Remove the 209 primer.
4. Using a small eye dropper or medicine dropper filled with water, force ably inject the water into the breech plug. Water will cause the black powder to become inactive. After you have done this 3-5 times, wait at least 30 minutes before attempting step 5.
5. After the black powder has become inactive, follow the directions in disassembling your firearm to remove the breech plug.
6. Using your ramrod, push the bullet from the breech or from the muzzle, whichever is easier.
7. Follow the steps for Cleaning your Firearm to return it to functional condition.

STORAGE

- Make sure your gun is not loaded before cleaning, storing or travelling, and/or handing it to another person.
- Store your unloaded firearm and bullets separately and in places inaccessible to unauthorized persons.
- Do not encase your firearm in anything which will attract or hold moisture.
- The internal mechanism should be oiled after use and periodically during storage, with an acid-free lubricating oil, while the external mechanism plus frame and barrel should be coated with an anti rust oil.
- Before re-using your gun, be sure to clean it and to check it for signs of wear or defects.
- If your firearm is to be used or stored in a cold climate, be sure to use an oil which will not freeze at low temperatures.

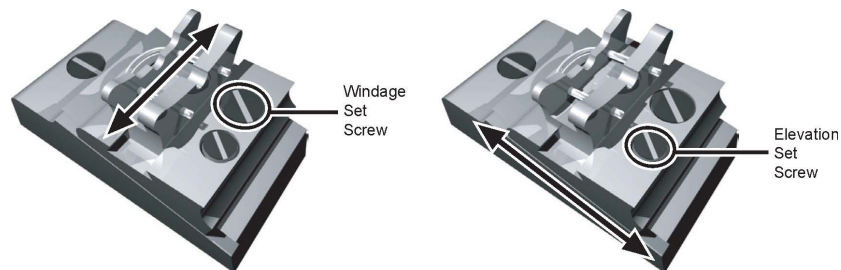
LOADING AND SHOOTING INSTRUCTIONS

STEPS FOR LOADING YOUR MUZZLELOADER

1. The bore and caliber area should receive a good cleaning just before the gun is loaded, so clean all oil and grease from inside the barrel, by running fresh patches down the barrel until they come out clean and dry.
2. Check to insure the safety is in the "Safe" position. Pull the lever and open the breech. Note the cocking indicator now shows red. If it does not, repeat step 2 and fully pull the lever to cock the trigger.
3. With gun pointed in a safe direction, place the new 209 primer on the breech. Close the breech and with the muzzle pointed in a safe direction, pull the trigger. This operation will dry out the base of the bore and the nipple and should be repeated two or three times using a new primer each time. Make sure and leave the last spent primer on the breech plug, this will insure that black powder does not enter into the breech in the next step.
4. With the muzzle pointed in upright position well away from your face and body and the hammer on rest position (down) measure and pour the powder down the barrel but: make sure you are using the recommended quantity and granulation of powder, do not overcharge your gun. Never pour the powder down the barrel directly from a flask, instead use an adjustable measure when loading your gun.
5. Place bullet into the bore; to facilitate this operation we suggest the use of a bullet starter, that will help the introducing of the bullet for the first 15 cm.(6"), then you can continue with the ramrod.
6. With ramrod seat the bullet down firmly against the powder, but without crushing it. Make sure the bullet is firmly seated against powder so that no air space exists between the bullet and powder-charge. A good method to determining this is to mark your ramrod at the muzzle, once the first bullet has been loaded.
7. With the gun pointed to a safe direction and your finger away from the trigger, place a 209 primer on the breech plug. Now the gun is loaded.
8. Check once again to insure the safety is engaged and close the breech. When ready to fire, disengage the safety and do so.
9. After firing slide the ramrod into the empty bore and wait for one full minute before loading the next powder charge; this will allow any remaining sparks in the barrel to burn out.
10. In case of a misfire make sure you keep the gun pointed in a safe direction and wait for at least one minute before re-priming. There is always the chance a spark is smouldering in the powder and the gun could fire at any moment. If after some attempts the gun still should not fire, unload it. (see Steps for Clearing a Malfunction) Caution: it is naturally understood that you must first remove the 209 primer from the breech.

FIBER OPTIC SIGHTS AND SCOPE MOUNTING FIBER OPTIC SIGHTS

Your Denali comes equipped with fiber optic sights. The rear sight is adjustable for elevation and windage.



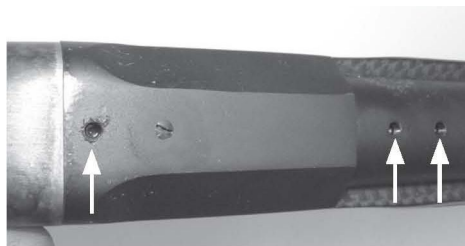
SCOPE MOUNTING

Our muzzleloaders are drilled and tapped for scope bases. The Denali requires a special order base that will make it compatible with all Weaver 45 style rings. The base can be ordered by calling us at 1-800-693-7455 or by visiting www.mw-os.com. The below illustration shows the mounting procedure for this base.

1. Begin by noting the swivel screw and front holes for the base.



2. Remove the following screws on the top of the barrel.



3. Screw the rear swivel screw into the barrel, leaving about a 1/16" gap. Screw the 2 front screws in until snug.



DISASSEMBLY AND CLEANING

Black powder and Pyrodex are corrosive chemicals that can damage your muzzleloader if not properly cleaned AFTER EACH USE.

CAUTION: Before disassembly and cleaning, make sure the firearm is unloaded and the safety is engaged.

DISASSEMBLING YOUR FIREARM

1. Begin by opening the breech. With an hex wrench, loosen the extractor screw.



2. Once the extractor screw is loose enough, you should be able to swing the extractor down away from the breech opening.



3. Using the supplied breech plug wrench, unscrew the breech plug. It may take considerable force to begin unscrewing.



4. Remove the breech plug and the gun is ready for cleaning.



CLEANING YOUR FIREARM

What you'll need:

- Black powder solvent or bucket of hot soapy water
- Cleaning brush or old toothbrush

1. Begin by cleaning the breech plug you disassembled earlier with a brush and solvent. Clean any fowling or residue on the outside and especially the inside of the breech plug.
2. Clean the breech area and extractor by removing any residue or fowling.
3. Saturate a patch with solvent and with the jag end of the ramrod, insert into the muzzle and begin scrubbing the barrel.
4. Continue step 2 with a new saturated patch until your patch comes out clean with no residue or fowling on it.
5. Inspect all parts closely, make sure that no residue is found. This includes the outside of the barrel and hammer. Remember that black powder is very corrosive, doing a thorough job cleaning can significantly extend the life of your muzzleloader.
6. Apply a light coat on every surface with an oil designed to prevent rust. This will guard against moisture and other chemicals that can degrade the metal.

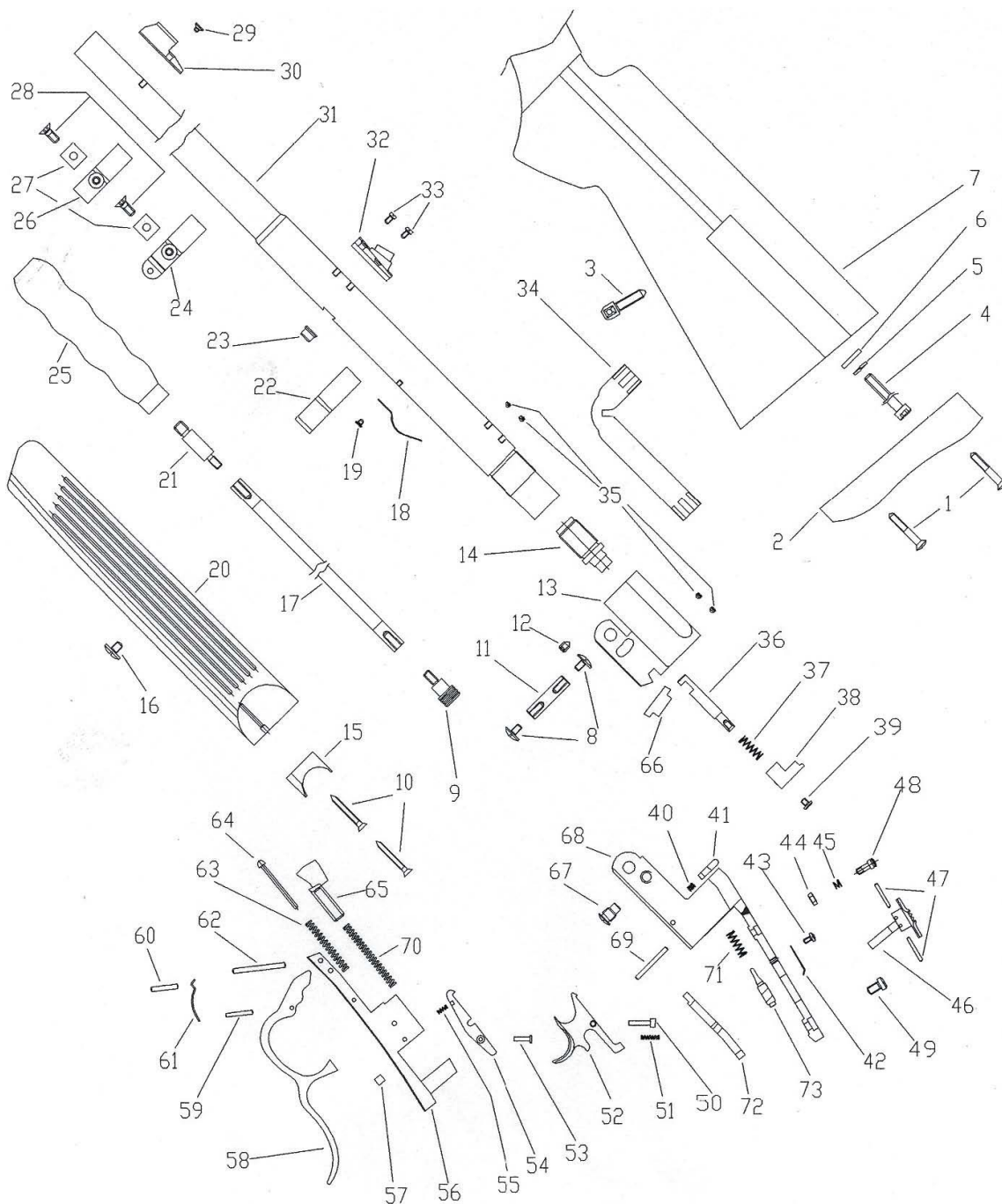
RE-ASSEMBLY OF YOUR FIREARM

Putting your muzzleloader together happens in the reverse order that you disassembled it. Make sure that the breech plug and extractor bolt are snug when re-assembling.

PARTS LIST AND BLOW APART DIAGRAM

No.	Description	Order
1	BUTT PLATE SCREW	LFC5395
2	BUTT PLATE	2391
3	SWIVEL SCREW	SPC5244
4	BINDING SCREW	PFM5708
5	BINDING SCREW WASHER	RON5711
6	BINDING SCREW FLAT WASHER	RON5710
7	STOCK	3599
8	HINGE BOLT PIN SCREW	TFC5720
9	JAG MALE THREAD	535-50
10	FOREARM IRON SCREW	LFC5718
11	HINGE BOLT PIN	4409
12	BARREL RETAINING SCREW	OST5717
13	BARREL COUPLING SLEEVE	3825
14	BREECH PLUG	5002
15	FOREARM IRON	2385
16	FOREARM SCREW	TFC5505
17	RAMROD	2341
18	RAMROD RETAINING SPRING	3802
19	RAMROD RETAINING SPRING SCREW	PFC5403
20	FOREARM	2038
21	BRASS REDUCTION	739
22	REAR BAND	2989
23	FOREARM RETAINING PIN	4411
24	MID BAND	2990
25	RAMROD HANDLE	751
26	FRONT BAND	2988
27	BAND SHOCK ABSORBER	2019
28	FRONT-MID BAND SCREW	PFM5240
29	FRONT SIGHT SCREW	AFC5715
30	FRONT SIGHT	3810
31	BARREL	2387
32	REAR SIGHT	5009
33	REAR SIGHT SCREW	AFC5714
34	BREECH PLUG WRENCH	2384
35	SCOPE MOUNTS HOLES SCREW	ST5243
36	EJECTOR PIN	4410
37	EJECTOR SPRING	3831
38	EJECTOR	3118
39	EJECTOR SCREW	PFC5719

No.	Description	Order
40	SAFETY LATCH PIN SPRING	3832
41	SAFETY LATCH PIN	4413
42	SAFETY TRIGGER SPRING	3821
43	SAFETY TRIGGER SPRING SCREW	TFC5725
44	COCKED HAMMER SIGNAL BUTTON SPRING	3119
45	COCKED HAMMER SIGNAL BUTTON SPRING	3824
46	TRIGGER SAFETY	4722
47	TRIGGER SAFETY PIN	COP5724
48	COCK HAMMER SIGNAL BUTTON	2344
49	TRIGGER GUARD SCREW	PFC5688
50	TRIGGER PIN	4408
51	TRIGGER SPRING	3823
52	TRIGGER	3117
53	HAMMER SAFETY PIN	4407
54	HAMMER SAFETY	4723
55	HAMMER SAFETY SPRING	3822
56	TRIGGER PLATE	4721
57	TRIGGER GUARD SHOCK ABSORBER	2018
58	TRIGGER GUARD	3116
59	TRIGGER GUARD PIN	COP5722
60	TRIGGER GUARD SPRING PIN	COP5726
61	TRIGGER GUARD SPRING	3817
62	FRAME-TRIGGER PLATE PIN	COP5721
63	BARREL LATCH SPRING	3818
64	BARREL LATCH SPRING PIN	4404
65	HAMMER	2388
66	EJECTOR CAM	3934
67	OPENING RETAINER SCREW	SPC5713
68	FRAME	2343
69	FIRING PIN RETAINER PIN	COP5723
70	MAINSRING	3820
71	FIRING PIN SPRING	3757
72	BARREL LATCH	2039
73	FIRING PIN	4405



WARNING

Discharging firearms in poorly ventilated areas, cleaning firearms, or handling ammunition may result in exposure to lead and other substances known to the State of California to cause birth defects, reproductive harm, and other serious physical injury. Have adequate ventilation at all times. Wash hands thoroughly after exposure.

Davide Pedersoli & co
Via Artigiani 57 - 25053 Gardone V.T. (BS) **ITALY**
TLF. 030 8915 000 Fax. 030 8911019
www.pedersoli2.com